

73

1951-10



FEDERAL

RESERVE

BANK

1951-1 C

**Our Leather Bound Engineers Note Books
are carried in the following rulings:**

- No. 380 LEVEL BOOK.** Left and Right Hand Page
the same as Left Hand Page
of this Book.
- No. 382 FIELD BOOK.** Left Hand Page as in this
Book, Right Hand Page 4x4
to the inch, Center Line Red.
- No. 384 MINING TRANSIT
BOOK.** Left Hand Page as in this
Book, Right Hand Page 8x8
to the inch, Center Line Red.
- No. 385 FIELD BOOK.** Left Hand Page as in this
Book, Right Hand Page 8 ver-
tical and 4 horizontal lines to
the inch, Center Line Red.

We also carry the Note Books listed above,
bound in extra strong Fabri-Hide (otherwise
the same quality of book,) which can be fur-
nished at a somewhat lower price.

In ordering Fabri-Hide covered books, add
the letter "F" to catalog number.

THE FREDERICK POST CO.

ENGINEERING and DRAFTING SUPPLIES

P. O. Box 803

CHICAGO

*If found please
return to Eugene
Schaub, Logan, Utah.*

B₅ F₅

see over

440 4689.28

① 11.7.1

0.81

11.8.3

0.47

11.9.0

0.05

11.38

0.30

11.90

0.40

10.07

1.86

12.06

5.68

0.00

11.1


0.08

4633.38

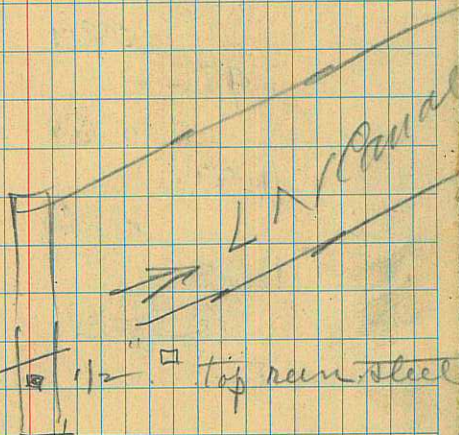
Direct 6-12-51 (3)

Levels from $\frac{1}{4}'' \times \frac{3}{4}''$ square

Reinforcing rod on 5' in x 6'
trailing of Heavay bridge at
Vern. Rogers on 17 El. ^{Road} level

To  box near N.E. cor
Cache Co. travel pit in NW
sec 26-112 16

↙ + at Andrew Hymans corner



(see 1949-1 C)

ages

top rain steel

B3 F3 WA

Hyde Park Gravel

6.98	3.89	4718.91
	0.68	
11.91	0.49	
11.95	.55	
		4.40

June 14 - 1951

5

Note: level notes copied from memo 1950-1m

See note BOK 1951-1
Note book of Hydro. notes upper
Little Bear River

R.C. College

SE corner of Co. Pit.

Top $2\frac{1}{2} \times 2\frac{1}{2}$ con. box
Ditch

Budge V. P.

W
Andrew Newman's

B. 88-182

W Perry Hyde to

Hanna L Seamon

Com at 47 13.55 ch 71 g
2' cor of W² of N 8[±] sec
11-12 W 1 8

W 0.72 ch. 57340' W

5.25 - N orly 2.75 ch

N orly 6.10 ch to W

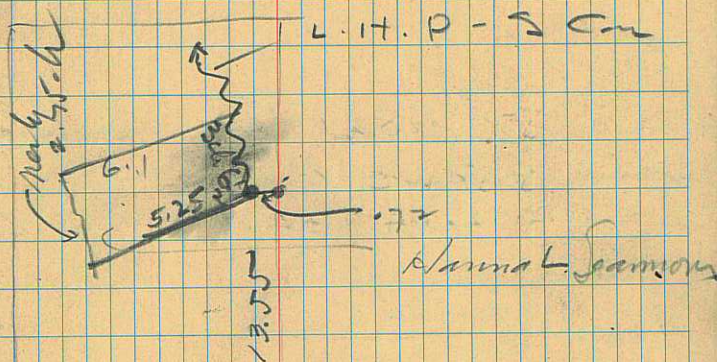
to L.H.P.S Canal

5' by along W bk of
Canal 3 ch 6 1/2' to beg
cont, 2 ac ±

May 27 - 1948

Crockett (7-9-51) 7
23 C 11 1 8 - 6

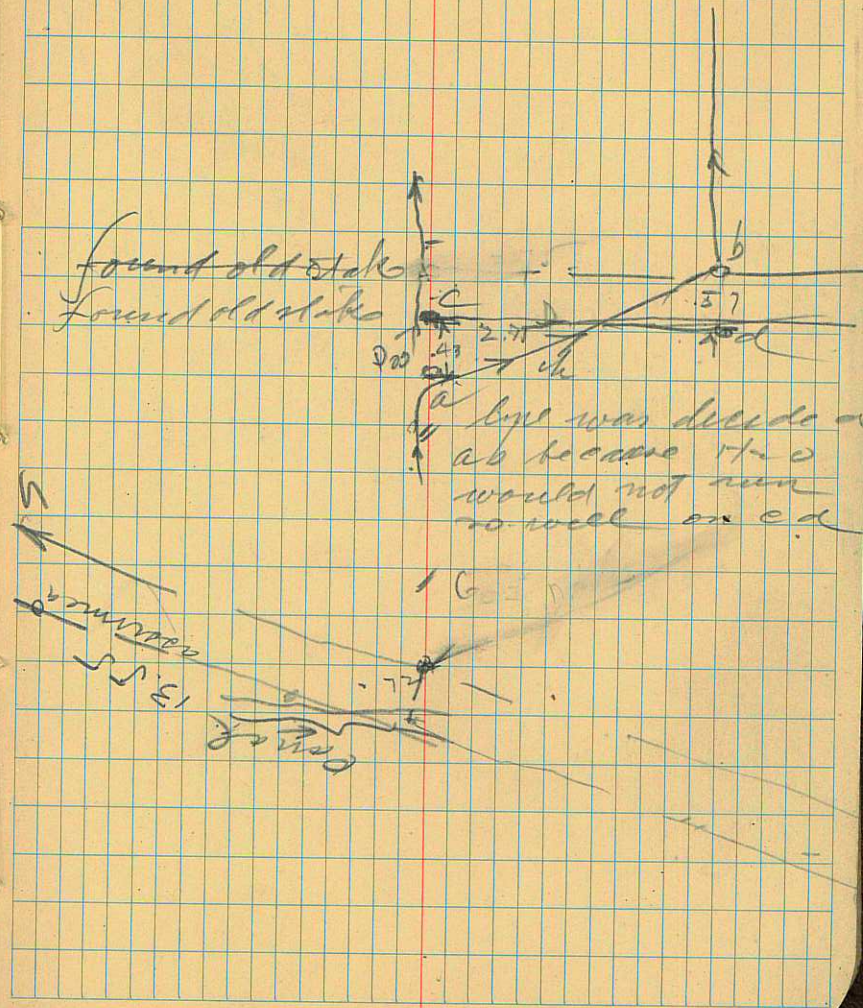
Survey for Cache
Co. near Hyde Park
gravel pit



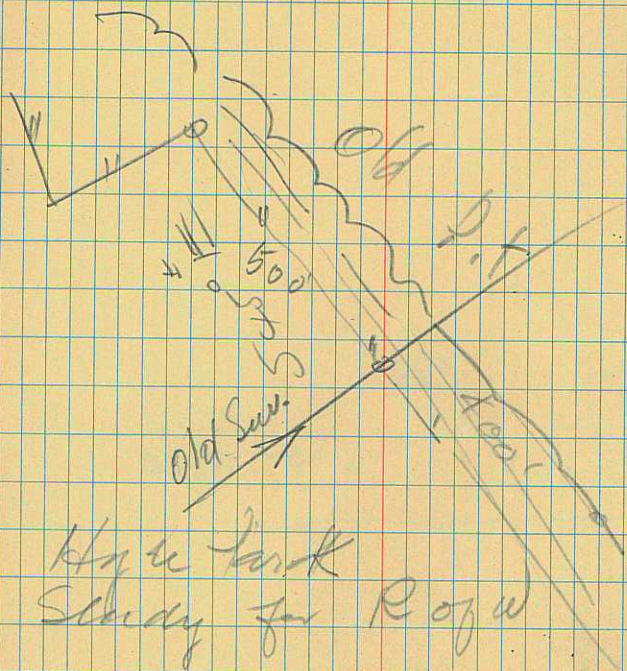
Survey 7-10-51
for Cache Co. on Hyde Park Pt

S73°40'W 5.267
S73°40'W 4.832

525
573
X3



7-10-1951
with Mayor Seamon



Hydrographic
Survey for Rofw

Cache County Gravel Pit at

BS FS WM North Logan

11.00

\$718.

229° 12 652.2

12929

#13

75.7

15 75 77 ^{sum 49}

13

560

4478



S⁰

557.4
- 94.8
652.2

→ E

330

90°

crisp ^{co} - 18° 35' x 100 = 94.80

Pracm light.

Logan Cache and/or

also \$2 + 30.45 on S 1/4 NE 1/4 of NW 1/4 sec 20 - T12N - R1E

Post 1130

Conrad Schaefer

B₅ 8.12 57
 4 +2+30 55
 Elev. HT
 UM 2.2 T 4757.57

~~8.12 0.71~~
 4 - +2° 7.66 4752.10

11.57 1.09 4748.19 4759.76
 4+ 1+80 4.10 4745.18

#6 11.17 0.44 4738.11 4749.23
 4+ 1+35 6.23 4732.52

#5 4.84 4733.71
 11.11 1.46 4727.44 4738.55

4+ 100 4.33 4726.07
 #7 3.78 4725.12

10.22 1.05 4718.68 4728.96
 4 0+50 10.70 2.98 4709.03 4719.23

4 0+00 11.95 4700.06
 4 0+50 2.98 9.60 4709.03 4712.01

+30
 4+ (0)
 #8 0.57 11.84 4718.06 4718.63
 3.19 4726.81
 11.00 4718.90 4729.0

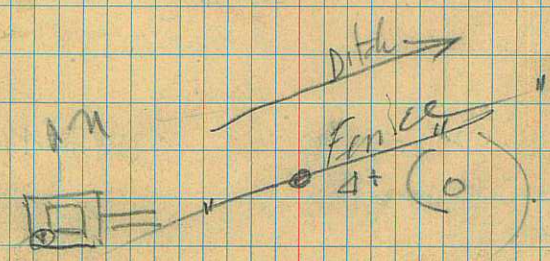
City distance

on S line NE also known as #13
 3000
 1800

254.60
 282.47
 77.13
 20

~~11.11~~
 #6

#4
 LINE 4
 10



4⁺ 6⁺⁰⁰ B5 F3 mm
4.44 4773.74 ✓

4⁺ 5⁺⁵⁰ 10.0^h 4768.18 ✓

4⁺ 5 11.58 0.57 4766.60 4778.18

4⁺ 5⁺⁰⁰ 3.45^h 4763.72 ✓

4⁺ 4⁺⁵³
4⁺ 4⁺⁵⁰ 4.90^h 4762.27 ✓

4⁺ 4⁺⁰⁰ 5.47^h 4761.70 ✓

4⁺ 3⁺⁵⁰ +80° 6.85^h 4760.32 ✓

4⁺ #5
4⁺ 3^{+00.00} 5.15^h 4762.02 ✓
8.30^h 4758.87 ✓

A 8.12 0.71 4759.05 4767.67 ✓

4⁺ 2^{+30.00}
69.55
X

TR-5' SA

17

68
2.0
0.5



0

5 line of NE of NW
2700 } sec 26-12 N E
10' ±

(2) 223.4

270 445.1 ^{with tube}
_{as memo} ✓
1.30 ^{pipe} 476.88

4- 7+55.2
7+55.2 ✓

1.90 476.28 ✓

4- 7+00

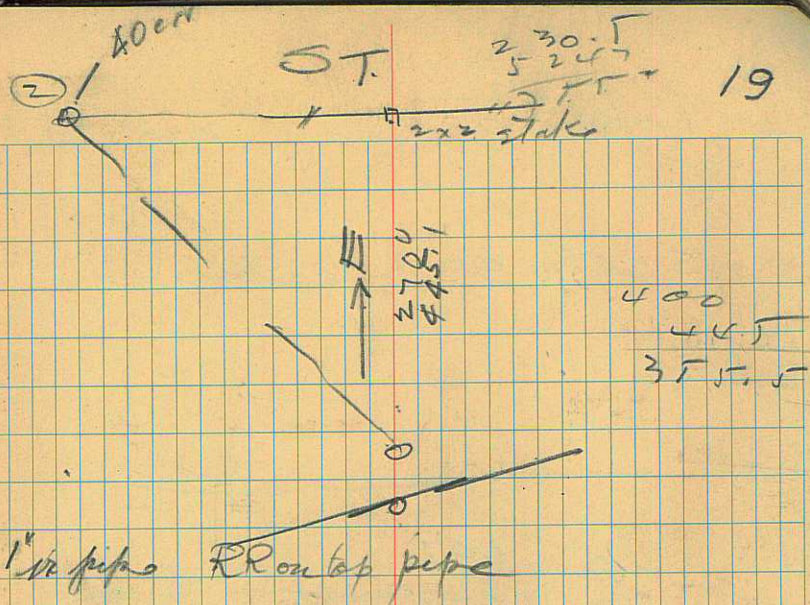
2.95^h 475.73 ✓

4- 6+50

3.23^h 474.95 ✓

4- 6+00

4.41^h 473.7 4778.18



626442 38

4⁺ 1735

5.29310 93 t Stake

4⁺ 3⁺¹⁰⁰

90° 497.

90 458.5 Stake

90° 424.8

90° 394. feel 1.2 5 of

180° 18

3_r

3 90° 355.5

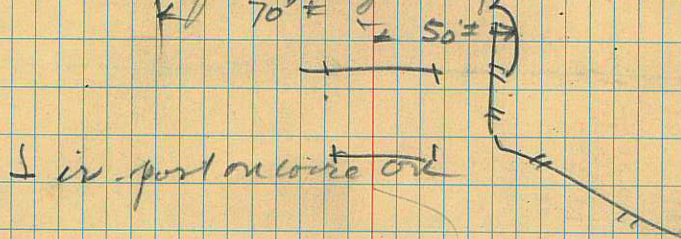
4⁺ 7^{+55.2}

113
15

21

to Shore Power pole

to St. in line Bergrenia line
in old fence & bought E for 1195 (new) =



400 0

#3

180° 18

fence
Wagon
South bridge

35 FS

2.00

4718.90

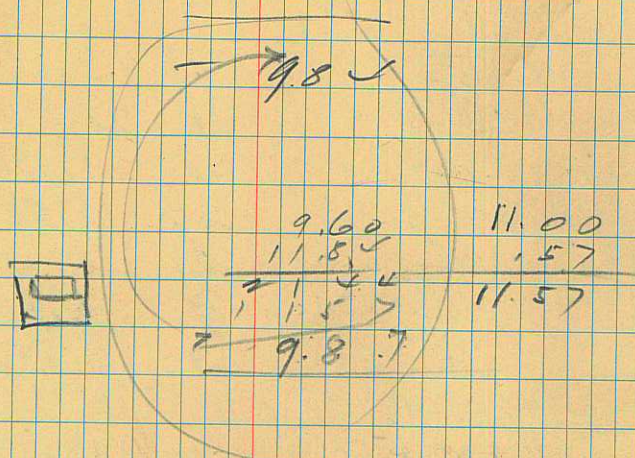
9+ 0+50 11.84 ✓

8 28297 90 (on gravel) ✓

7 25355 20 ✓

4+ 1+00
*

23



Est. insulator on Guy wire for 11.57
 S bar edge Power pole

RR L U

18 315°	4.	5.68
17 334-30	10.	12.2
16 322-	10.	13.08
15 301-50	2.	5.55
14 289-	2.	5.28
13 279-	3.	5.4
12 260°	3.	5.9
11 253-10	10.	13.52
10 239-35	9.	13.9

6.32

9 235-07	9.	14.
8 239-10	9.	13.05
7 242-15	9.	13.02
6 250-30	10.	13.65
5 241-30	10.	13.4
4 243-	11.	13.9
3 244-20	13.	13.8
2 100-45	5.0	5.52
1 120-30	5.0	5.80

11.32

4720

4720

8

4.52

47438

Elev

1

25

47268

47268
47268
47268

3371

38.21

4518

50

55

19

3

49.18

25

4725.

1435 3371

28297

4.

\downarrow Am RR L U Elev

338-	11.	13.3
340-45	4.2	6.
321-40	4.	5.68
339-	4.	5.45
343-	4.	5.9
349-30	3.	5.
12-45	4.	5.54
51-30	5.	5.92
68-15	4.	5.32
72-45	5.	5.42
2. 84-30	5.	5.55
98-	5.	5.67

1-32

473 0

113-	5	5.7
98-30	5.	5.52
91-30	5.	5.49
4-45	5.	5.42
343-40	5.	5.92
16-16	5.	5.85
9-20	5.5	7.
344-	4.	5.8
344-30	4.	5.4

6.32

4725

8x

Day	RR	L	V	ELEV	H
55	60°	4.9	9.0		
54	60°13	5.9	9		
53	62°30	4.0	5.07		
52	242°30	5.0	5.32		
51	280°	5.0	5.95		
50	258°15	5.08	3	5.20	
49	242°45	5.08	10	13.60	
48	242°30	5.08	8	13.55	4715
		1.20		18.9	
		-5.08			
47		+4.92			
47	180°	13.21	1	4715.66	
47	180°	4715			
47	100°	4.30		4728.87	
				4724.57	

243-	9.	13.55
242-30	1.	5.5
252-30	2.	5.92
244-30	2.	5.7
280-30	2.	5.6
301-45	2.	5.6
321-	2.	5.15

8x

1.32

473B

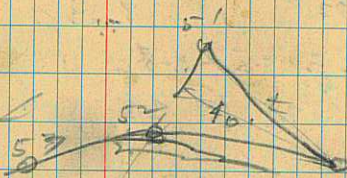
2008
189 29

1.18
20.15
18.9
1.9
18.9
20.15

W line
~~W line of prop~~

4720.15
on condor

4720.08



Fence W side Side Road

My RR L U EI

67				
68	69°38	12	13.15	
67	218°10	13	13.52	
Jan 202°		13	13.6	
66	238°45 -8.83	11	13.12	
65	240°25 -8.83	10	13	4705
				4705
$\frac{0+50}{x}$	+4.8			4709.03
64	239°20	9	13.28	4710
63	239°36	11	13.9	
62	244°30	11	13.3	
61	250°45	12	13.7	
60	246°30	13.0	13.8	4710
59	304°36	13	13.5	4710
58	230°40	13	13.65	
57	70°14	10.68	13.05	
56	62°	10.08	9	13.1
				4710

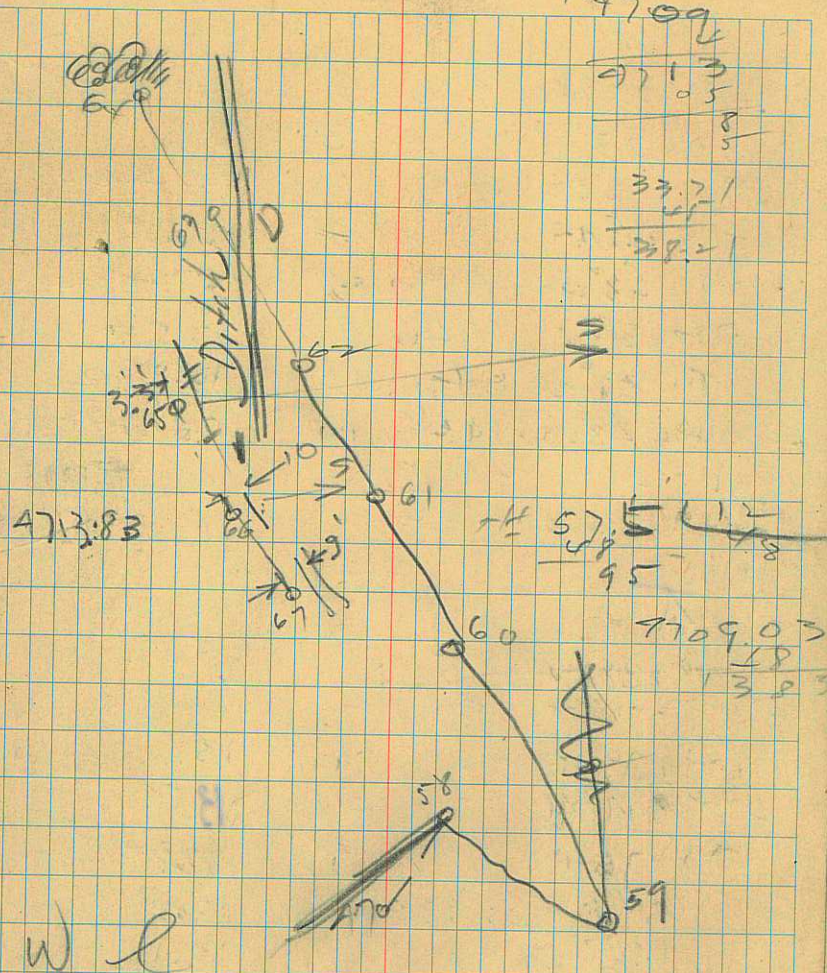
$\frac{40.715}{47x}$

$$\frac{135}{185} = \frac{1165}{1165}$$

$$\frac{140}{19.37} = 31$$

$$\frac{4713}{105} = 44.88$$

$$\frac{33.21}{27} = 1.23$$



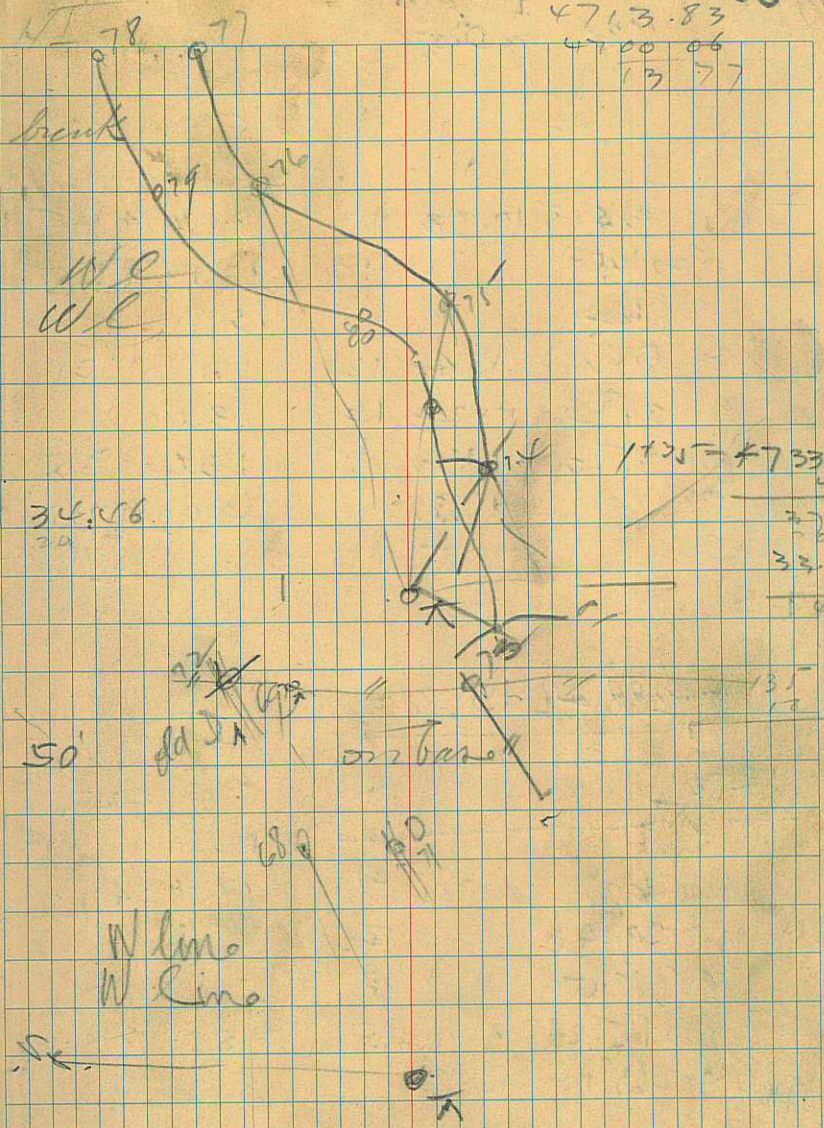
#. Ang RR L ELEV

81	223°40	9.46	5.	5.32	4725
80	73°45	9.46	5.	5.80	4725
79	62°52	9.46	11.	13.4	4725
78	60°47	9.46	9.	13.05	4725
77	63°36	14.46	10.	14	4720
76	66°	14.46	11.	13.5	4720
75	80°	14.46	13.	13.9	20
74	20830	14.46	13	13.13	4720
1+35		10.75			4733.71

4 1+165
X

4+0.00	180°	13.774			
73	79°10'	-236	10	13.6.	470
72	66°46'		10	13.85	
71	75°13'		12	13.3	4700
70	64°35'	13.83	10	13.9	4700
69	60°23'		9.	13.1	
68	62°	8.83	10.	13.5	

4+0.50
X



4713.83
4700.06
13.77

1125 - 4733.71

34.56

50'

old J.A.

on bank

W.Lime

W.Lime

#	ang	±R.R or DIST			
94	94° 5'	17.93	13	13.80	4735
93	135°		13	13.50	4735
92	162°		13	13.50	
31	90° 40'	17.93	12	13.0	35
90	81° 30'	17.93	12	13.44	
89	75° 30'	17.93	12	13.6	35.0
88	67°	17.93	10	14.06	4735.0
4+1+80		7.75			458

87

87288.42 15.80

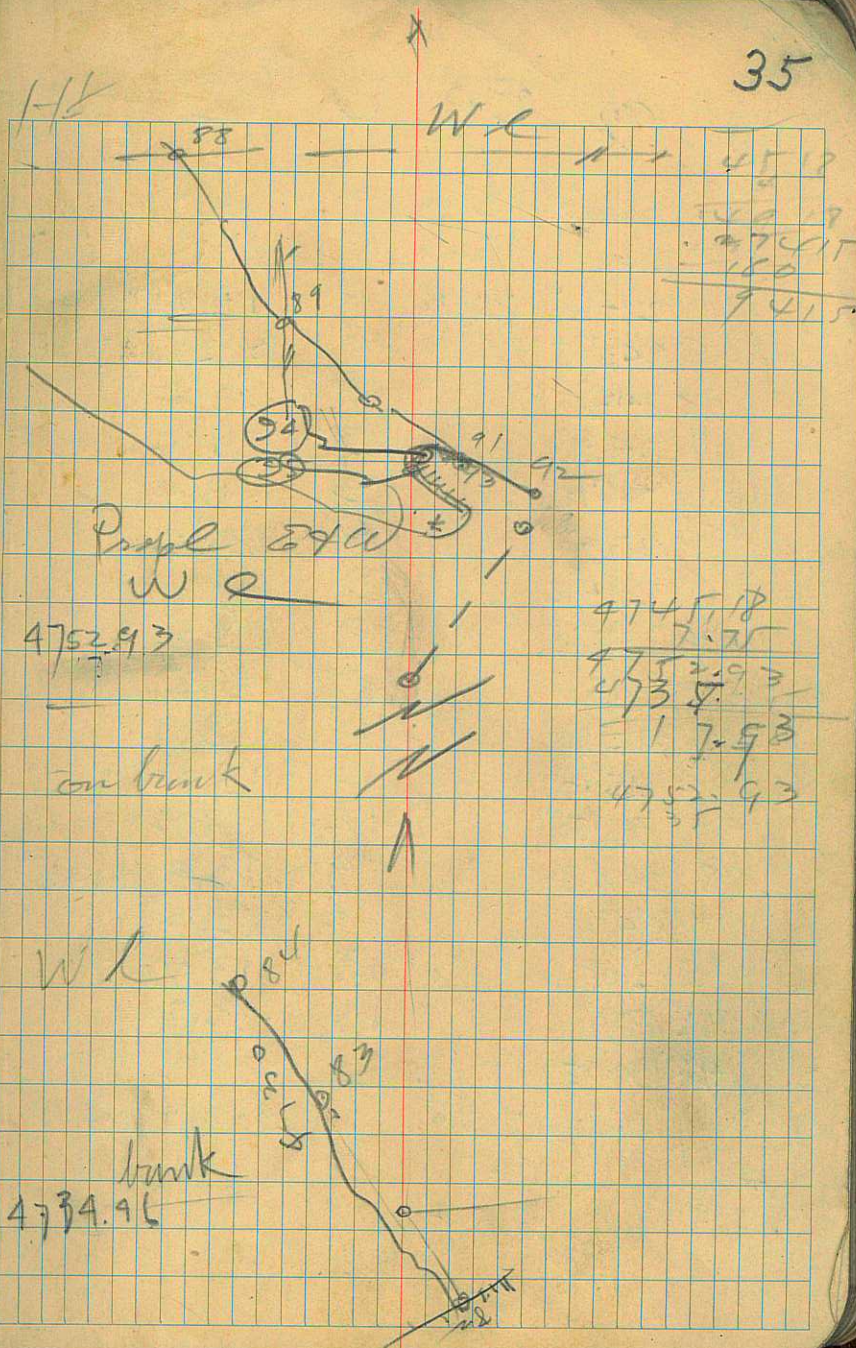
4+1+80

4745.08

86	60°	4.46	9	13.1	4730
85	59° 40'		2	5.1	
84	60° 15'	4.46	4	5.73	4730
83	65° 20'	4.46	5.0	5.56	4730
4+1+6.5	82° 63' 10"	4.46	5	5.22	4730

4+1+6.5

35



ang	RP	U	L	Elev
112	249 ³⁰	13.13	8	13.7
111	244 ⁴⁰	13.13	8	13.1
110	246 ⁰	13.13	8	13.217740
109	243 ¹⁵	18.13	8	B. 35 47.35
108	243 ⁰		8	13.2
107	249 ⁰		9	13.6
106	267 ⁴³		9	B. 4
105	279 ⁰		9	13.2
104	289 ¹⁵		9	13.1
103	305 ⁰⁵		10	13.3
102	315 ⁰		11	13.5
101	312 ³⁰		11	13.1
100	315 ¹⁰		12	13.82
99	321 ⁵⁰		12	13.72
98	342 ³⁰		13	13.92 47.35
97	284 ¹⁰		13	13.2
96	200 ³⁰		15	13.20
95	90 ⁰		13.0	13.70
94	91 ¹⁵	18.13		
		7.95		

87

4745.18

4753.13

began Aug 6 - 1951

E
M 538

37

1813
1793f. " " " " " "
fene W. side ST45.17
7.95

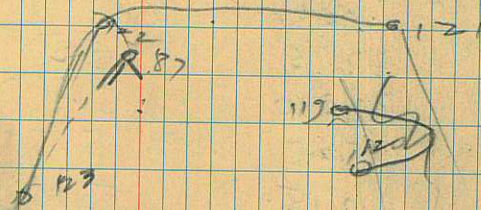
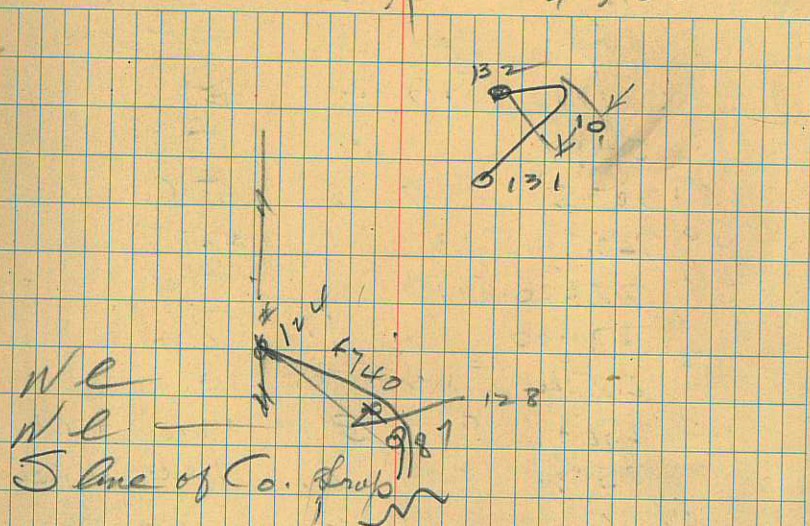
37.22

Pt. My RR L U Ek

132	332°	8.13	5.✓	8	
131	327.55		12	13.7	
130	352°20	8.13	5	5.87	
129	202.15	8.13	Dist = 5		
128	122°30	8.13	" = 16		1
127	63°40	8.13	5.✓	7.0	
126	62°10	8.13	9	13.20	4745
125	64°30	8.13	9	13.15	4740
124	70°13		12	13.52	4740
123	85°		13	13.68	
122	246°30		13	13.1 = 10'	
121	345°00		13	13.95	
120	324.45		12	13.72	
119	328°50		11	13.2	
118	324		11	13.1	
117	315°15	13.13	11	13.55	
116	305		10	13.35	4740
115	289°		9	13.2	
114	268°10		9	13.5	
113	255°15	13.13	9	13.7	4740

87

53.13
813 39
4500



Pt.	Am	RR	L	U	Elev
152	313 ³⁰	5.13	3	5.95	4748
153	312 ¹⁰	5.13	2	5.1	
152	309 ⁰		2	5.1	
157	305 ⁵⁷	5.13	2	5.5	
150	291 ⁰	5.13	1	5.35	
149	286 ²⁰	5.13	1.	5.4	
148	270 ³⁰		1.	5.6	
147	265 ²⁰	5.13	5.25	10.	
146	252 ³⁷	5.13	5.18	10.0	4748
145	254 ³⁰	5.13	6.	11.0	4748.0
144	251 ⁰⁶	8.13	6.	11.00	4745
143	250 ⁰	8.13	5.20	10.	
142	265 ⁴⁵	8.13	5.3	10.	
141	270 ¹⁵	8.13	5.52	10.	
140	290 ¹⁰	8.13	5.7	10.0	
139	305 ⁴⁵	8.13	5.55	9.0	
138	312 ¹⁵		5.05	8	
137	312 ³⁸	8.13	5.25	8.	
136	315 ¹⁵	8.13	5.12	8.	
135	317 ¹⁴		5.1	8.	
134	316 ³⁰	8.13	5.55	8.	
133	321 ⁵⁰	8.13	5.18	8.	
87 _n		8.13			4745

5313
 513
 4800

EL windst. } maybe
 EL windst. } 6' under
 natural con.

53.13

Dy RR L U E6 LIT

43

173	318°	7.13	-140'	4755
172	332°10	7.13	= 80	
171	344°30	7.13	= 70'	
170	350°30	7.13	= 60'	4755
169	215°20	7.13	= 20	
168	108°30	7.13	= 20	
167	65°00	7.13	5.55	7.0
166	62°30	7.13	G	10 4755

4 * 2 + 30.45
 $\frac{11}{55} = 4.62$ 4757.5

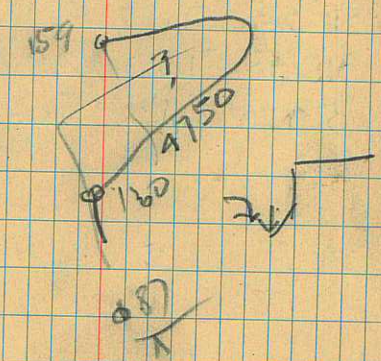
165	60°	3.13	9	13.0
164	58°25'		4	5.7
163	19°	3.13	= 3'	
162	358°	3.13	4.	4.9
161	350°		4.	5.07
160	330°45	3.13	4.	5.7
159	331°30	3.13	2.	5. 4750.10
158	325°30	3.13	2	5.1
157	319°13	3.13	3	5.75
156	320°	3.13	2.	5.30
155	316°37	3.13	2.	5.15 4750
87*		3.13		



w e

4762.13
 w e grab

57.5 /
 5.00
 62.5 /
 55
 7.5 /
 57.5 /
 7.1 /
 30
 57.5 /
 62.13

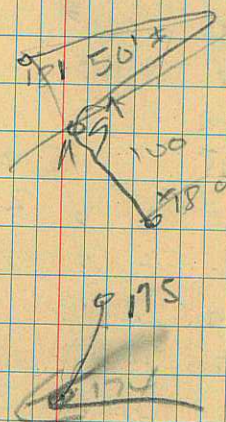


4753.13

Pt	Am	RR	L	U	Flux	H/I
193	281 ⁴	2.13	1.	5.70		
192	280 ¹⁰	2.13	1.	5.50	4760	
191	275 ²⁴		1.	5.69		
190	266 ⁰	2.13	1.0	5.82	4760	
189	264 ²⁰		1.0	5.95	4760	
188	263 ⁵⁰	2.13	1.	6.	4760	
187	254 ²⁰		7	11.0	13.13	4760
186	256 ⁴⁰		7	± 1 ⁰³⁷	13.2	4769.3
185	261 ⁰	7.13	5.	10.		
184	265 ³⁷	7.13	5.25	10.0		
183	275 ³⁰	7.13	5.40	10		
182	280 ³⁰	7.13	5.52	10.		
181	285 ¹⁰	7.13	5.7	10.		
180	298 ⁰	7.13	5.65	9		
179	299 ²⁵	7.13	5.6	9.		
178	307 ⁰	7.13	5.7	9.		
177	306 ⁵⁰	7.13	6.	9.		
176	311 ³⁰	7.13	5.75	9		
175	315 ⁴⁵	7.13	5.67	9.		
174	313 ²⁰	7.13	5.2	8.		

$$A^+ \frac{2+3095}{\lambda}$$

on cor. E. of E. side star



4762.13

my RR L J Elev

47

54.5
65
50

210	58°25'	205	3.	13.25	
209	55°50'	2.05	4.	5.6	
208	51°20'	2.05	= 60		
207	24°20'	205	= 17½		4760
A ⁺ 2+30.45		54½=454			4757.5
206	4°30'	2.13	= 65±		
205	348°10'	2.13	= 95'		
204	330°40'		= 85		
203	317°15'		4.	5.3	
202	317°30'	2.13	2.0	5.0	
201	316°	2.13	2	5.48	
200	315°20'	2.13	2	5.53	
199	308°20'	2.13	2.	5.2	
198	308°	2.13	2.	5.6	
197	302°20'		2.0	5.6	
196	300°		2.	5.60	
195	294°	2.13	2.	5.65	
194	285°50'	2.13	1.	5.3	

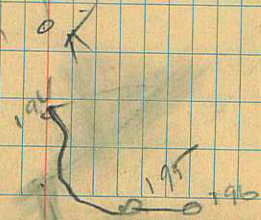
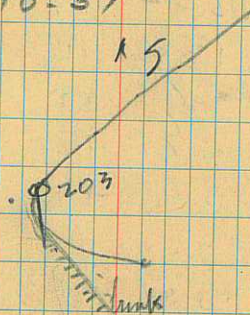
A⁺ 2+30.45

WR

~~F~~

4757.5
454
4766.205

4762.05 began 8-10-51



Ang REL U Elev L/E

229	235 ³⁰	13.44	8	13.8	
228	237 ⁰	13.44	8	13.6	
227	244 ⁰		9	14.0	
226	244 ¹⁰	13.44	9	13.85	
225	239 ⁰⁵		9	13.80	
224	236 ⁵²	13.44	9	13.12	4765
223	241 ⁴⁵	13.44	10	13.75	
222	240 ³⁰	13.44	10	13.55	
221	245 ⁴⁰		10	13.3	
220	244 ⁰	13.44	11	13.95	
219	251 ⁵⁰	13.44	11	13.3	
218	240 ⁴⁰		11	13.35	
217	259 ⁵⁰		12	13.95	
216	220 ³⁰	13.44	12	13.9	
215	204 ⁰⁸	13.44	12	13.11	
214	180 ⁰	13.44	13	13.75	
213	106 ³⁸	13.44	12	13.34	
212	103 ³⁵	13.44	11	13.08	4765
211	77 ⁴²	13.44	10	13.6	4765.0
	56 ^{4.7}	13.44			4773.24

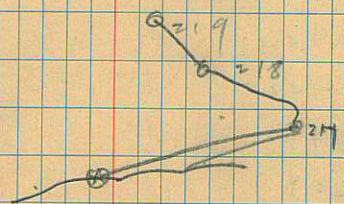
0.0
6 R

4773.24
4773.24

11 13.08 49

56.5 (12)
47
81

98
62.5
16



4773.74
47
77.24
65
13.44

hike
since

4778.44
5

Ang	RR	L	U	Flev	Ht
248	55	20	8.44	9	13.6
247	61	20	}	5.62	9.
246	75	20		5.87	8.0
245	227	30		5.93	7.00
244	229	30		5.27	7.0
243	267	40	8.44	12.	13.95
242	249	44	8.44	578	8.0
241	257	52	8.44	11x0	13.33
240	253	30	8.44	5.5	8.
239	250	37	8.44	10	13.6
238	252	10	8.44	9	13.12
237	246	10	8.44	9	13.45
236	246	20	8.44	9	13.75
235	247		8.44	9	13.8
234	247			9	13.9
233	231	13	8.44	7.	13.25 4770
232	231	50	8.44	7.	13.30
231			8.44	7	4770.
231	230	30	13.44	7.	13.4
230	230	30		7.	13.30

46+00
6
+

~~to fence~~
~~bank~~

~~110~~
5T.
~~110~~
~~116T~~

Pl. Ang. RRL U Elev

264	90	14.5 ⁺	10	13.53
263	90	11.2	11.	13.9
262	90	8.4	5.55	8.0
261	90	6.90	5.52	7.0

2713

4⁺ 552

4.46 ~~1.4~~

4776.88

260

289¹⁵ 0.50 1 5.71 4777.94

5.85

259 303¹² 3.90 3 5.85 4774.54

258 317³² 3.80 3 5.1 4774.64

257 334²⁵ 2.50 4 5.71 4775.94

256 35 7. 11.23

255 259⁴⁰ 3 5.75

254 268³⁰ 3. 5.1

253 271²⁰ 4. 5.95

252 257²⁰ 3.44 4. 5.65

251 266⁰⁸ 4. 5.45

250 360 3.44 4.0 5.04

249 45 40 3.44 1. 6. 4775.0

4⁺ 6⁺⁰⁰
X

76.88
446
813

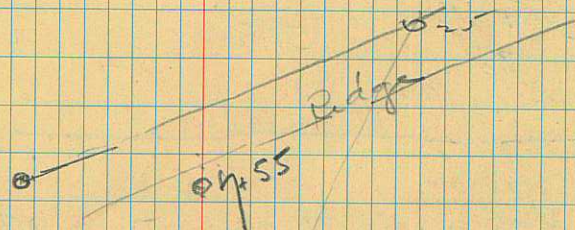
53

5.75
1.2
15
70

to main spare A.C

28.54

Secor. by hub



+

on line line

4778.44

0 Any RR L U Flex LFT

55

272 2° -3.50 9 4755

271~~π~~ +4.66

271 6°30' -0.50 5.00 5.83 4753.24

~~4.34~~ ~~4750~~

42³⁰ 130³⁰

270~~π~~ +3.33 4751.01

270 310°30' 11.00 11.0 13.60 4751.01

2¹⁰⁰ 180°

4 2^{30.45} 54¹⁴ = 45 .1 4757.51

269 226°40' 6.34 7 13.7 4775

268 226°43' 6.34 7 13.6

267 233°36' 6.34 5.3 11.00

266 238°30' 6.34 5.3 11.0

265 270° 6.34 5.4 9 4775

4 7^{+55.2} 6.34 4775

4758.50

4754.30

4762.01

4781.34

58.5

~~52.84~~
18.50

4752.72
~~475~~
9.00

51

4751.07

~~4750.34~~ 62.60
3.21
48.81

310.30

53.50

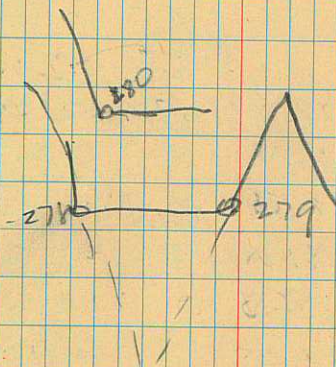
265
4775

H. Hwy RR L U Elev

57

280	139 ³⁰	13.50	12	13.35	
280	139 ³⁰	13.50	13	13.92	45
279	185°	8.50	40'		
288	119°50'	8.50	50'		
277	134°16'	8.50	88'		
276	176°20'	8.50	5.7	7	4750
275	133°30'	3.50	4	5.35	4750
274	128°	3.50	5	5.83	
273	65°	3.50	= 23		4755

271_x



L C J

295	235°38'	4726.22	6.0	+2°34'	12.00
294	242°10'	4741.40	5.65	-1°20'	11.0
293	268°10'	4771.31	1.0	+1°30'	5.85
292	275°16'	4774.41	5.28	+2°26'	10.0
291	278°24'	4776.97	5.10	+2°24'	10.0
290	298°20'	4776.88	6.0	+2°30'	11.4
289	307°	4773.37	1.0	+1°56'	5.30
288	320°18'	4775.50	1.0	+2°16'	5.19

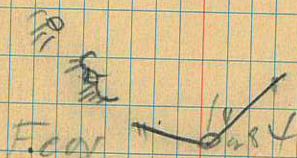
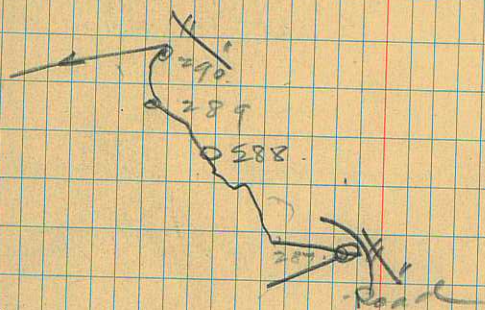
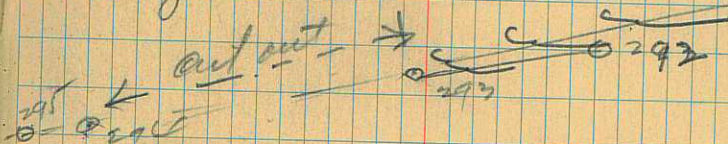
			L	+2°16'	5.13
287	332°30'	4775.75	5.82	+2°58'	10.0
286	330°55'	4762.06	4	+1°37'	5.74
285	318°	4761.09	4	+1°35'	5.35
284	53°13'	4760.58	4	+1°10'	5.65
283	357°50'	4758.37	5	+1°30'	5.66
282	199°14'	4749.75	11.	-1°10'	11.50
	270°				

4 2 +30.45

4.50

Wogan gravel pit
Aug 20 1951 59
Study ~~Diagram~~

near gate



Perank = b

47.62.

120

4757.57

4762.01

900 S & Ditch to W

889

882 S

0

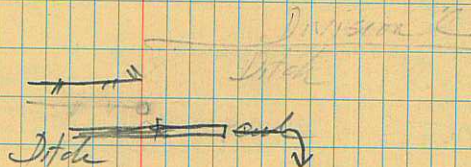
S

4105
4.105
63
12.3.75

Blue mark
Ditch 700
Divisional

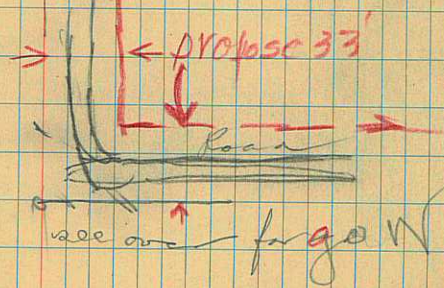
16.5
5
D-21
33
858
12
870

Divisional
Ditch



Iver Larsen
13.31 ac

Propose 33'
Road



see over fence W

2488

2412

2000 fms

1609

1413

1408

1405

744

399 W[±]

0

65

Hx Egg
Res.

2488
1701
1083
Crimson E

Zilles
old fence

Irwin
Finchey

1609
7/11
600
150

Elect to 1413
Sorenson 413
669

1408
Blue Opus

Jarvey
Nelson
8' x 16' 1/2 to stake

744

Iver
Lansam
399 f
Silo
17720
12 mi ±
0099 W

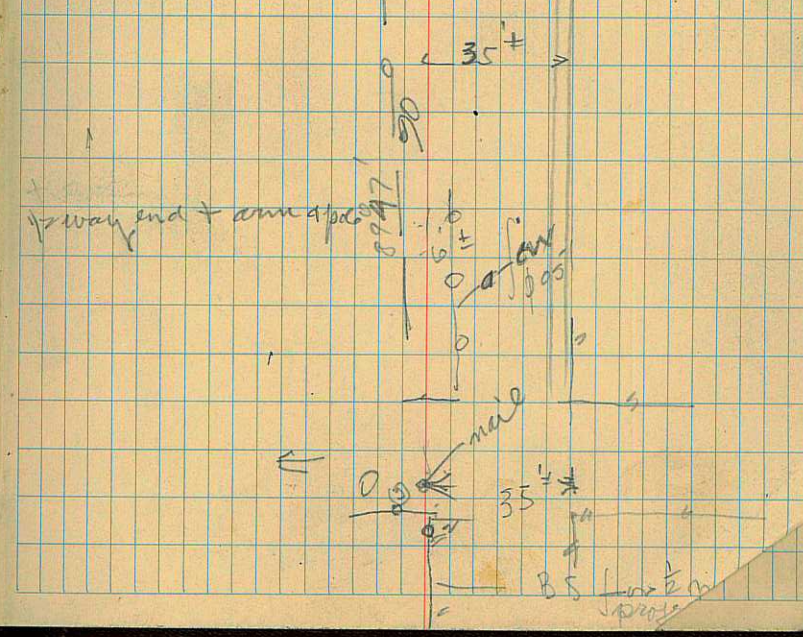
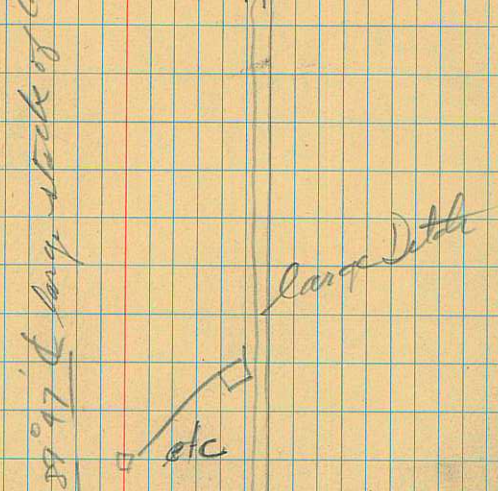
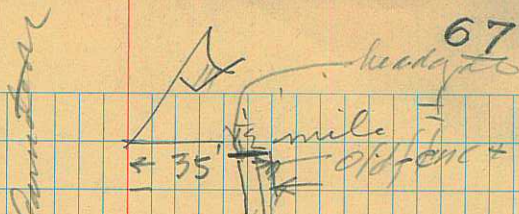
3 299° 16.3
 2 270° 21.3
 270°

175°

pole 1 p 6 e

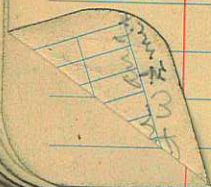
also 2 miles

0
 1



69

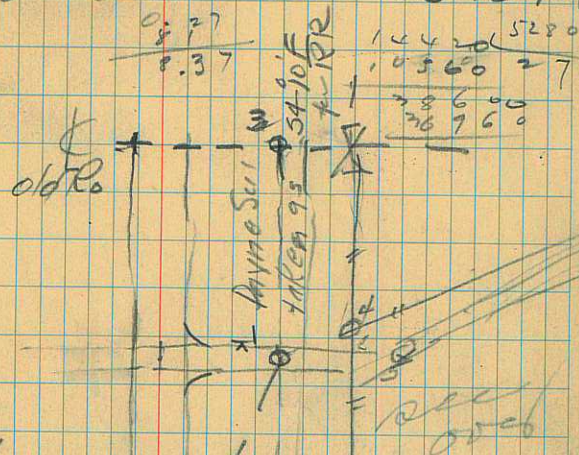
5	245 ⁰ ₃	7	7.74
4	222	10	11.05
3	178 ⁰ ₂₉	3	11.7
✓	2238	4	11.06

178⁰₂₉

in TIES

69

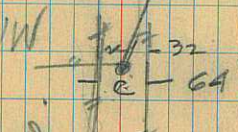
Survey & Study newly constructed
Road along & railroad tracks
Canal in SW Sec 34 - 15 N 1 W



⊥ Road
cur post

N E 1/4 Sec 34 15 N 1 W

along rail
W rail



1492

W Crater
Canal

Notes
1) correct
20 29
taken
Ayer's map
6 miles South

15	239°08	7	11.3
14	34°50	8.	11.8
13	240°40	4.	11.6
12	237°17	4	11.4
11	235°23	8	11.75
10 _A			
10	227°00	1	5.93
9	229°30	7	11.7
8	227°26	7	11.7
7	226°48	5	11.53
6	225°10	5	11.53

Survey see page
68

Nov. 13 - 1951
by order of Co. Attorney
Jack Champlin

H₁ H₂ L

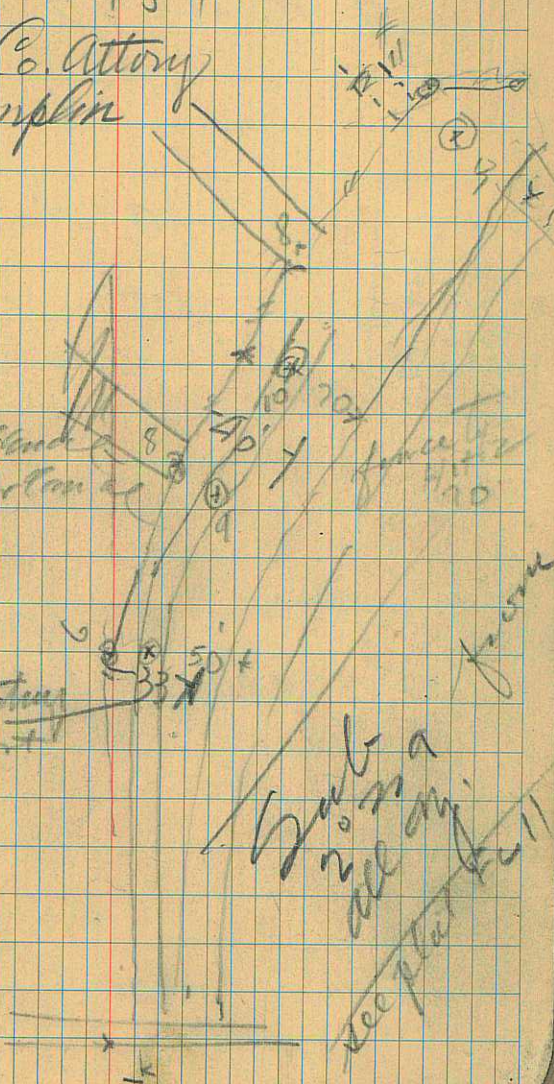
H₁ H₂ L
bridge over stream

Log Post

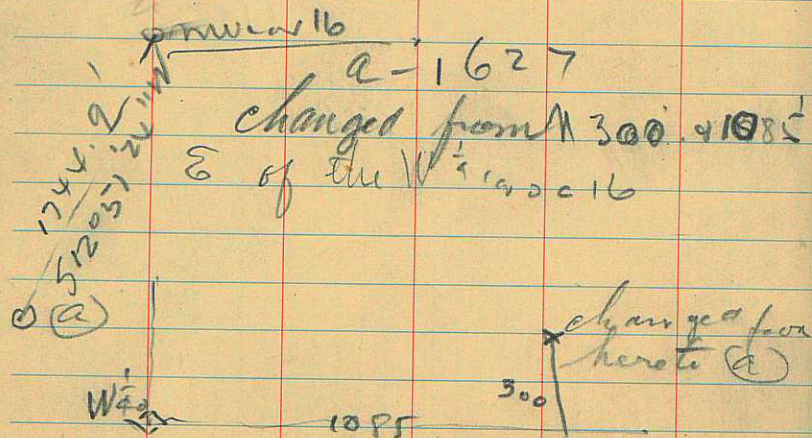
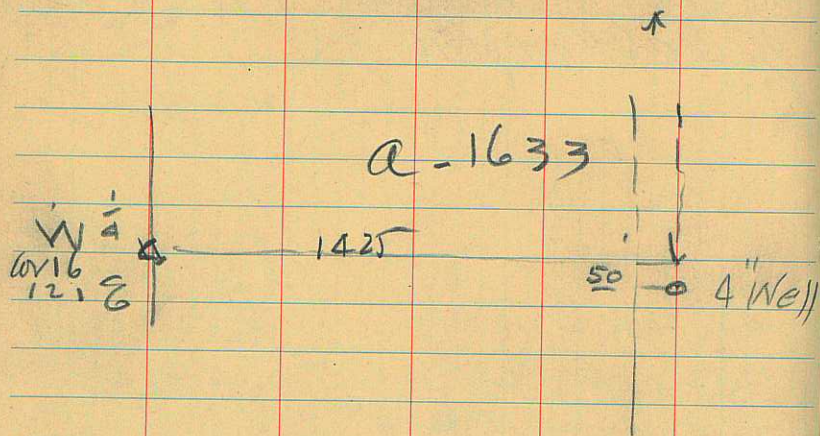
boundary
post

boundary
post

boundary
post



Wells on our part
a-1633



$$\begin{array}{r} .757 \\ 652 \\ \hline 15 \quad 14 \end{array}$$

$$\begin{array}{r} 3785 \\ 4542 \\ \hline 493564 \end{array}$$

$$\begin{array}{r} 160 \\ 0003 \\ \hline 0480 \end{array}$$

$$\begin{array}{r} 4+ \\ 0+50A+ \\ \hline 4+ \end{array}$$

$$\begin{array}{r} 7.91 \\ 66 \\ \hline 4770 \end{array}$$

$$\begin{array}{r} 4770 \\ \times 770 \\ \hline 52570 \end{array}$$

$$\begin{array}{r} 4762 \\ 4761 \\ \hline 1125 \\ 4925 \end{array}$$

$$\begin{array}{r} 458 \\ 355 \\ \hline 12585 \end{array}$$

$$\begin{array}{r} 1320 \\ 1233 \\ \hline 97 \end{array}$$

$$\begin{array}{r} 400 \\ 411 \\ 33 \\ \hline 3551 \end{array}$$

$$\begin{array}{r} 12885 \\ \hline 12885 \end{array}$$

$$\begin{array}{r} 12835 \end{array}$$

$$\begin{array}{r} 10000 \\ 11246008 \\ \hline 11246008 \end{array}$$

$$\begin{array}{r} 10008 \\ 048 \\ \hline 10056 \end{array}$$

$$\begin{array}{r} 10008 \\ 60 \\ \hline 10068 \end{array}$$

$$\begin{array}{r} 160 \end{array}$$

Handloaf
meat
in dips.
Flour
bun cake

78
65

